



CONTACTOR, AC-3 5.5 KW/400 V, AC 230 V, 50 HZ, 3-POLE, SIZE S0, SCREW CONNECTION

Figure similar

product brand name	SIRIUS
Product designation	power contactor

General technical data:

Degree of pollution	3
Mechanical service life (switching cycles)	
<ul style="list-style-type: none"> <li>• of the contactor typical</li> </ul>	10 000 000
<ul style="list-style-type: none"> <li>• of the contactor with added electronics-compatible auxiliary switch block typical</li> </ul>	5 000 000
<ul style="list-style-type: none"> <li>• of the contactor with added auxiliary switch block typical</li> </ul>	10 000 000
Protection class IP	
<ul style="list-style-type: none"> <li>• on the front</li> </ul>	IP20
<ul style="list-style-type: none"> <li>• of the terminal</li> </ul>	IP20
Equipment marking	
<ul style="list-style-type: none"> <li>• acc. to DIN EN 61346-2</li> </ul>	Q
<ul style="list-style-type: none"> <li>• acc. to DIN EN 81346-2</li> </ul>	Q

Main circuit:

Number of poles for main current circuit	3
Number of NC contacts for main contacts	0
Number of NO contacts for main contacts	3
Operating current	
<ul style="list-style-type: none"> <li>• at AC-1</li> </ul>	
<ul style="list-style-type: none"> <li>— at 400 V at ambient temperature 40 °C</li> </ul>	40 A
Rated value	

— up to 690 V at ambient temperature 40 °C Rated value	40 A
— up to 690 V at ambient temperature 60 °C Rated value	35 A
• at AC-3 — at 400 V Rated value	12 A
• at AC-4 at 400 V Rated value	12.5 A
<b>Operating current with 1 current path</b>	
• at DC-1 — at 24 V Rated value	35 A
— at 110 V Rated value	4.5 A
• at DC-3 at DC-5 — at 24 V Rated value	20 A
— at 110 V Rated value	2.5 A
<b>Operating current with 2 current paths in series</b>	
• at DC-1 — at 24 V Rated value	35 A
— at 110 V Rated value	35 A
• at DC-3 at DC-5 — at 110 V Rated value	15 A
— at 24 V Rated value	35 A
<b>Operating current with 3 current paths in series</b>	
• at DC-1 — at 24 V Rated value	35 A
— at 110 V Rated value	35 A
• at DC-3 at DC-5 — at 110 V Rated value	35 A
— at 24 V Rated value	35 A
<b>Active power loss at AC-3 at 400 V for rated value of the operating current per conductor</b>	0.5 W
<b>Control circuit/ Control:</b>	
<b>Type of voltage of the control supply voltage</b>	AC
<b>Control supply voltage with AC</b>	
• at 50 Hz Rated value	230 V
• Rated value	50 Hz
<b>Operating range factor control supply voltage rated value of the magnet coil with AC</b>	
• at 50 Hz	0.8 ... 1.1
<b>Auxiliary circuit:</b>	
<b>Number of NC contacts</b>	
• for auxiliary contacts	

— instantaneous contact	0
<b>Number of NO contacts</b>	
• for auxiliary contacts	
— instantaneous contact	0
<b>Operating current at AC-15</b>	
• at 230 V Rated value	6 A
• at 400 V Rated value	3 A
<b>Contact reliability of the auxiliary contacts</b>	1 faulty switching per 100 million (17 V, 1 mA)

#### Short-circuit:

<b>Design of the fuse link</b>	
• for short-circuit protection of the main circuit	
— with type of assignment 1 required	fuse gL/gG: 63 A
— with type of assignment 2 required	fuse gL/gG: 25 A
• for short-circuit protection of the auxiliary switch required	fuse gL/gG: 10 A

#### Installation/ mounting/ dimensions:

<b>Mounting type</b>	screw and snap-on mounting onto 35 mm standard mounting rail according to DIN EN 50022
• Side-by-side mounting	Yes
<b>Height</b>	85 mm
<b>Width</b>	45 mm
<b>Depth</b>	91 mm
<b>Required spacing</b>	
• for grounded parts	
— at the side	6 mm

#### Connections/ Terminals:

<b>Type of electrical connection</b>	
• for main current circuit	screw-type terminals
• for auxiliary and control current circuit	screw-type terminals
<b>Type of connectable conductor cross-section</b>	
• for main contacts	
— solid	2x (1 ... 2.5 mm <sup>2</sup> ), 2x (2.5 ... 6 mm <sup>2</sup> ), max. 2x 10 mm <sup>2</sup>
— single or multi-stranded	2x (1 ... 2,5 mm <sup>2</sup> ), 2x (2,5 ... 6 mm <sup>2</sup> ), max. 2x 10 mm <sup>2</sup>
— finely stranded with core end processing	2x (1 ... 2.5 mm <sup>2</sup> ), 2x (2.5 ... 6 mm <sup>2</sup> )
• for AWG conductors for main contacts	2x (16 ... 12), 2x (14 ... 10), 1x 8
• for auxiliary contacts	
— solid	2x (0.5 ... 1.5 mm <sup>2</sup> ), 2x (0.75 ... 2.5 mm <sup>2</sup> ), max. 2x (0.75 ... 4 mm <sup>2</sup> )
— finely stranded with core end processing	2x (0.5 ... 1.5 mm <sup>2</sup> ), 2x (0.75 ... 2.5 mm <sup>2</sup> )
• for AWG conductors for auxiliary contacts	2x (20 ... 16), 2x (18 ... 14), 1x 12

#### Mechanical data:





<b>Size of contactor</b>	S0
--------------------------	----



## Ambient conditions:

Installation altitude at height above sea level maximum	2 000 m
Ambient temperature <ul style="list-style-type: none"><li>during operation</li></ul>	-25 ... +60 °C

## Certificates/ approvals:

General Product Approval	Functional Safety/Safety of Machinery	Declaration of Conformity
 CCC	 UL	 EG-Konf.
 CSA	 EAC	<a href="#">Type Examination</a>

Test Certificates	Shipping Approval
<a href="#">Special Test Certificate</a>	 ABS
<a href="#">Type Test Certificates/Test Report</a>	 DNV
	 GL
	 LRS

Shipping Approval	other
 RINA	<a href="#">Confirmation</a>
 RMRS	<a href="#">other</a>
	<a href="#">Environmental Confirmations</a>

## Further information

### Information- and Downloadcenter (Catalogs, Brochures,...)

<http://www.siemens.com/industrial-controls/catalogs>

### Industry Mall (Online ordering system)

<http://www.siemens.com/industrymall>

### Cax online generator

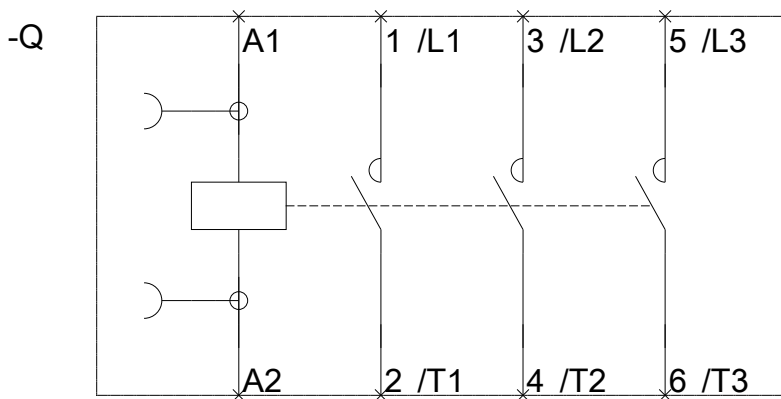
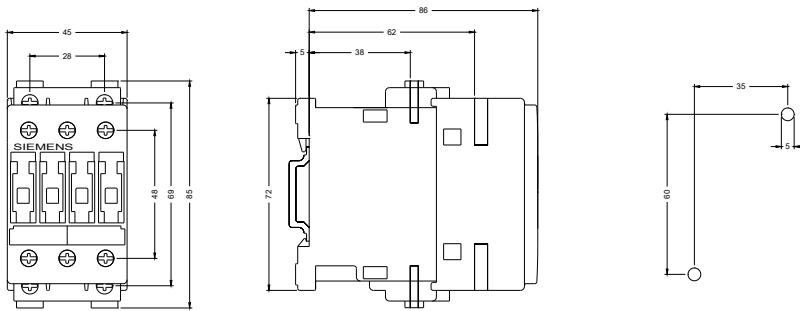
<http://support.automation.siemens.com/WW/CAXorder/default.aspx?lang=en&mlfb=3RT10241AP00>

### Service&Support (Manuals, Certificates, Characteristics, FAQs,...)

<https://support.industry.siemens.com/cs/ww/en/ps/3RT10241AP00>

### Image database (product images, 2D dimension drawings, 3D models, device circuit diagrams, EPLAN macros, ...)

[http://www.automation.siemens.com/bilddb/cax\\_de.aspx?mlfb=3RT10241AP00&lang=en](http://www.automation.siemens.com/bilddb/cax_de.aspx?mlfb=3RT10241AP00&lang=en)



last modified:

14.05.2015